



  
WALKER HOMES  
& CONSTRUCTION





**ZEPH WALKER**

0438 165 999

INFO@WALKERHC.COM.AU

BUSINESS ADDRESS: 54 MARINE PARADE, NEWELL BEACH, 4873

POSTAL ADDRESS: PO BOX 947, MOSSMAN, 4873

QBCC LICENSE 1187646

ABN: 65 022 774 0829

**WWW.WALKERHC.COM.AU**





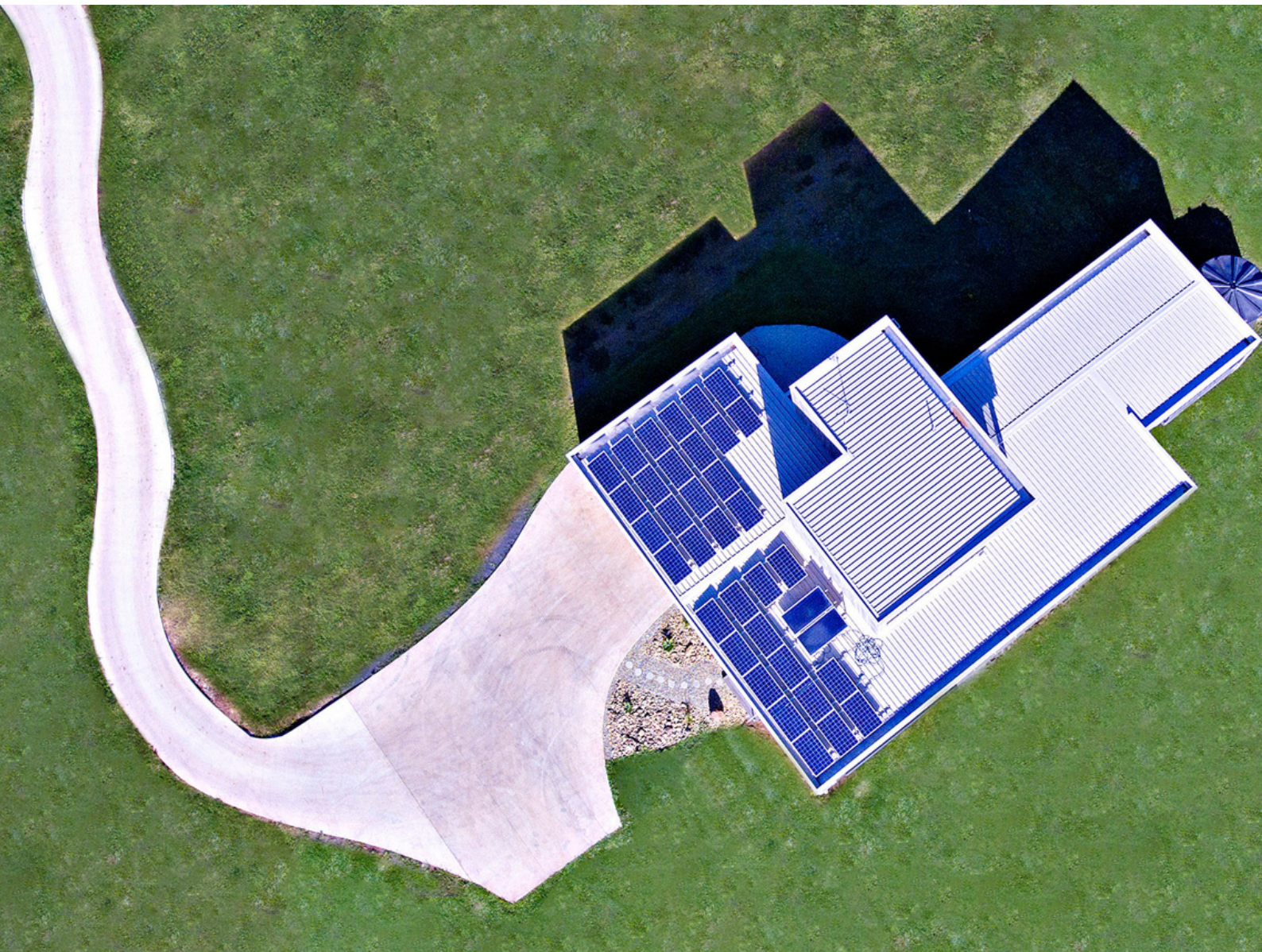


# VALUES & VISION

WALKER HOMES & CONSTRUCTION

Walker Homes and Construction's core *value* is to maintain an ethical and empathetic approach to project management, with an emphasis on the timely and cost effective delivery of high quality workmanship.

Our vision is to be an exceptional building company, completing inspiring, unique and sustainable residential and commercial projects.

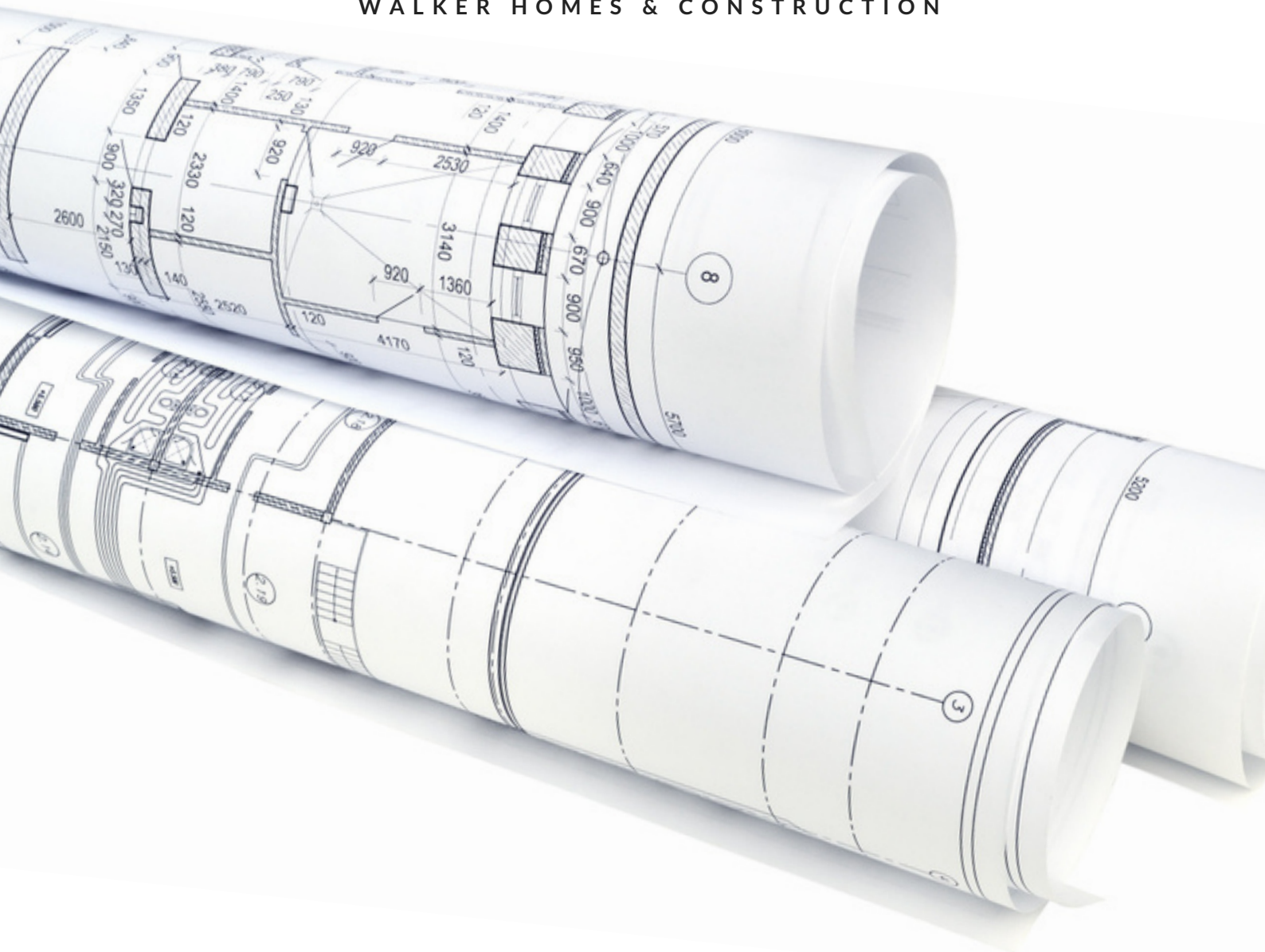






# OUR STRATEGY

WALKER HOMES & CONSTRUCTION



To ensure that we are an attractive option for our clients, we continue to research new ways to create ecologically sustainable projects, to adapt to local markets, and to make our client's dreams a reality.

We are experienced with ascertaining the suitability of materials, especially in this tropical environment.

Through continued research and development, we seek to actively improve our business practice.





# CORE COMPETENCIES & INDUSTRY SERVICE

WALKER HOMES & CONSTRUCTION

Walker Homes and Construction (WHC) is a 100% Aboriginal owned business with more than 20 years' experience in the construction industry including civil work in the mining industry.

We have nurtured enduring relationships with previous clients, contractors and service providers ensuring our ability to effectively manage, accurately plan and resource construction projects across a broad regional area. These projects include residential development through to large-scale commercial and industrial construction work for the private, corporate and government sectors.

WHC is able to provide exceptional service in construction in remote locations. Our remote experience in Hicks Island, Normanton, Mt Isa, Weipa, Moranbah, Aurukun and Mapoon enables us to quickly mobilise into the area and to ensure compliance with local requirements. WHC is skilled in obtaining the specific council approvals, plans, and certifications for new homes, developments and construction. The team at WHC have a proven history in working well and communicating clearly with architects, designers, certified and regulatory bodies.

**"ZEPH IS A RARITY IN THE INDUSTRY-  
BUILDING STRONG TRUSTING RELATIONSHIPS  
WITH HIS CLIENTS THROUGH EXCEPTIONAL  
COMMUNICATION, HONESTY AND A HANDS-ON  
INVOLVEMENT IN EACH AND EVERY PROJECT"**





“WE PROVIDE A BROAD SPECTRUM OF  
CONSTRUCTION SERVICES FROM  
COMPLETING BUDGET-FOCUSED BASIC  
HOMES THROUGH TO INNOVATIVE AND  
ECO-FOCUSED LOW IMPACT HOUSING AND  
SUSTAINABLE CONTEMPORARY  
RESIDENCES, AS WELL AS CIVIL AND  
COMMERCIAL PROJECTS”





# PROJECTS & CLIENTS

WALKER HOMES & CONSTRUCTION



## RECENT PROJECTS

- ✓ \$1.5 million QBuild upgrades and refurbishments at Mossman State High School and Mossman State School
- ✓ \$417,000 Wyndham Hotels Ramada Resort pool deck replacement for Paynters
- ✓ Peppers Beach Club refurbishment of five rain damaged villas for Paynters
- ✓ \$440,000 New house build-design and construct four bed home on uneven ground to capitalise on views
- ✓ Construction of three pedestrian bridges for Queensland Parks & Wildlife Service
- ✓ \$730,000 New house build-design and construct two-storey home in Goldsbrough Valley
- ✓ Refurbishment of Apunapima health centre at Mossman Gorge for Bamanga Bubu Ngadimunku Inc





## MAJOR CLIENTS

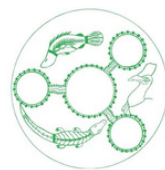
- ✓ QBuild
- ✓ Queensland Government
- ✓ Queensland Department of Education and Training
- ✓ Queensland Parks and Wildlife Services
- ✓ Queensland Department of Environment and Science
- ✓ Douglas Shire Council
- ✓ Jabalbina Aboriginal Corporation
- ✓ Bamanga Bubu Ngadimunku Inc
- ✓ Far Northern Milling



**Queensland  
Government**  
Department of Education and Training



**Queensland  
Government**  
Department of Environment and Science



**DOUGLAS  
SHIRE COUNCIL**

## PROUD SPONSOR

- ✓ Mossman & District Gymnastics Club
- ✓ Mossman Sharks Rugby League Club



















# MANAGEMENT SYSTEMS

WALKER HOMES & CONSTRUCTION

WHC engages HSEQ consultants to ensure ongoing compliance with Australian Laws and occupational health and safety standards for our Health, Safety, Environmental and Quality (HSEQ) management systems. WHC has a highly robust, effective WHS and Environmental Management System compliant with the following International and National Standards:

- ISO 45001:2018 Occupational Health and Safety System
- ISO 14001:2015 Environmental Management System
- AS 4801:2001 Occupational Health and Safety Management System

